



Certification Report

SAITO Yutaka, Commissioner
 Information-technology Promotion Agency, Japan
 2-28-8 Honkomagome, Bunkyo-ku, Tokyo

IT Product (TOE)

Reception Date of Application (Reception Number)	2025-04-21 (ITC-5913)
Certification Identification	JISEC-C0857
Product Name	KONICA MINOLTA AccurioPress C14010 / C12010 / C10500 with UK-112 and PF-713
Version and Release Numbers	GM0-11
Product Manufacturer	KONICA MINOLTA, INC.
Conformance of Functionality	PP conformant functionality, CC Part 2 Extended
Protection Profile Conformance	Protection Profile for Hardcopy Devices 1.0 dated September 10, 2015 (Certification Identification: JISEC-C0553)
Name of IT Security Evaluation Facility	ECSEC Laboratory Inc., Evaluation Center

This is to report that the evaluation result for the above TOE has been certified as follows.

2025-10-29

YANO Tatsuro, Technical Manager
 IT Security Technology Evaluation Department
 IT Security Center

Evaluation Criteria, etc.: This TOE is evaluated in accordance with the following standards prescribed in the "IT Security Evaluation and Certification Scheme Document."

- Common Criteria for Information Technology Security Evaluation
Version 3.1 Release 5
- Common Methodology for Information Technology Security Evaluation
Version 3.1 Release 5

Evaluation Result: Pass

"KONICA MINOLTA AccurioPress C14010 / C12010 / C10500 with UK-112 and PF-713, Version GM0-11" has been evaluated based on the standards required, in accordance with the provisions of the "Requirements for IT Security Certification" by Information-technology Promotion Agency, Japan, and has met the specified assurance requirements.

Notice:

This document is the English translation version of the Certification Report published by the Certification Body of Japan Information Technology Security Evaluation and Certification Scheme.

Table of Contents

1.	Executive Summary.....	1
1.1	Product Overview.....	1
1.1.1	Protection Profile or Assurance Package.....	1
1.1.2	TOE and Security Functionality.....	1
1.1.2.1	Threats and Security Objectives.....	2
1.1.2.2	Configuration and Assumptions.....	2
1.1.3	Disclaimers.....	2
1.2	Conduct of Evaluation.....	3
1.3	Certification.....	3
2.	Identification.....	4
3.	Security Policy.....	6
3.1	Users.....	6
3.2	Assets.....	6
3.3	Threats.....	7
3.4	Organizational Security Policies.....	7
4.	Assumptions and Clarification of Scope.....	9
4.1	Usage Assumptions.....	9
4.2	Environmental Assumptions.....	9
4.3	Clarification of Scope.....	11
5.	Architectural Information.....	12
5.1	TOE Boundary and Components.....	12
5.2	IT Environment.....	13
6.	Documentation.....	14
7.	Evaluation conducted by Evaluation Facility and Results.....	15
7.1	Evaluation Facility.....	15
7.2	Evaluation Approach.....	15
7.3	Overview of Evaluation Activity.....	15
7.4	IT Product Testing.....	16
7.4.1	Developer Testing.....	16
7.4.2	Evaluator Independent Testing.....	16
7.4.3	Evaluator Penetration Testing.....	18
7.5	Evaluated Configuration.....	20
7.6	Evaluation Results.....	21
7.7	Evaluator Comments/Recommendations.....	21
8.	Certification.....	22
8.1	Certification Result.....	22
8.2	Recommendations.....	22

9.	Annexes.....	23
10.	Security Target.....	23
11.	Glossary	24
12.	Bibliography	26

1. Executive Summary

This Certification Report describes the content of the certification result in relation to IT Security Evaluation of " KONICA MINOLTA AccurioPress C14010 / C12010 / C10500 with UK-112 and PF-713, Version GM0-11" (hereinafter referred to as the "TOE") developed by KONICA MINOLTA, INC., and the evaluation of the TOE was completed on 2025-10-06 by ECSEC Laboratory Inc., Evaluation Center (hereinafter referred to as the "Evaluation Facility"). It is intended to report to the sponsor, KONICA MINOLTA, INC., and provide security information to procurement entities and consumers who are interested in the TOE.

Readers of this Certification Report are advised to read the Security Target (hereinafter referred to as the "ST") described in Chapter 10. Especially, details of security functional requirements, assurance requirements and rationale for sufficiency of these requirements of the TOE are described in the ST.

This Certification Report assumes procurement entities who purchase the TOE to be readers. Note that the Certification Report presents the certification result based on assurance requirements to which the TOE conforms, and does not guarantee an individual IT product itself.

1.1 Product Overview

An overview of the TOE functions and operational conditions is described below. Refer to Chapter 2 and subsequent chapters for details.

1.1.1 Protection Profile or Assurance Package

The TOE conforms to the following Protection Profile [14][15] (hereinafter referred to as the "Conformance PP").

Protection Profile for Hardcopy Devices 1.0 dated September 10, 2015
(Certification Identification: JISEC-C0553)

1.1.2 TOE and Security Functionality

The TOE is a Multi-Function Printer (hereinafter referred to as "MFP"), which has functions such as copy, scan, and document storage and retrieval.

The TOE provides security functions required by the Conformance PP to prevent the document data processed by the MFP and the setting data etc. affecting security from unauthorized disclosure and alteration.

For these security functions, the validity of the design policy and the accuracy of the implementation were evaluated within the scope of the assurance requirements of the Conformance PP.

Threats and assumptions assumed for the TOE are described in the following sections.

1.1.2.1 Threats and Security Objectives

The following threats are assumed for the TOE.

There are threats that user document data and data affecting security functions, which are assets to be protected by the TOE, may be disclosed or altered by unauthorized operation of the TOE or unauthorized access to the network to which the TOE is connected.

There are also threats that security functions of the TOE may be compromised by the failure of the TOE itself or installation of unauthorized software.

The TOE provides security functions required by the Conformance PP such as identification and authentication, access control, encryption, and digital signature to counter these threats.

1.1.2.2 Configuration and Assumptions

The TOE is assumed to be operated under the following configuration and assumptions.

The TOE is assumed to be operated in an environment where unauthorized physical access to the TOE is restricted and connected to a LAN separated from the Internet.

The setting, administration and maintenance of the TOE must be performed in accordance with the guidance documents by a trusted administrator. Users of the TOE must have been trained in order to use the TOE securely.

1.1.3 Disclaimers

The following operation is not ensured by this evaluation:

- An environment different from that described in "4.2 Environmental Assumptions"
- TOE with settings different from those described in "7.5 Evaluated Configuration"

The following is not ensured by this evaluation

- Products sold outside Japan and guidance documents in English

1.2 Conduct of Evaluation

Under the IT Security Evaluation and Certification Scheme that the Certification Body operates, the Evaluation Facility conducted IT security evaluation and completed in 2025-10, based on functional requirements and assurance requirements of the TOE according to the publicized documents "IT Security Evaluation and Certification Scheme Document"[1], "Requirements for IT Security Certification"[2], and "Requirements for Approval of IT Security Evaluation Facility"[3] provided by the Certification Body.

1.3 Certification

The Certification Body verified the Evaluation Technical Report [13], Observation Reports prepared by the Evaluation Facility as well as evaluation documentation, and confirmed that the TOE evaluation was conducted in accordance with the prescribed procedure. The certification oversight reviews were also prepared for those concerns found in the certification process. The Certification Body confirmed that those concerns pointed out by the Certification Body were fully resolved, and that the TOE evaluation had been appropriately conducted in accordance with the CC ([4][5][6] or [7][8][9]) and the CEM (either of [10][11]). The Certification Body prepared this Certification Report based on the Evaluation Technical Report and fully concluded certification activities.

2. Identification

The TOE is identified as follows:

TOE Name: KONICA MINOLTA AccurioPress C14010 / C12010 / C10500 with UK-112 and PF-713

TOE Version: GM0-11

Users can verify that a product is the TOE, which is evaluated and certified, by the following means.

Users confirm the following information on the MFP body and operation panel display, and the packaging box of the HDD unit as described in the guidance document.

- Model name: One of the following:

KONICA MINOLTA AccurioPress C14010
KONICA MINOLTA AccurioPress C12010
KONICA MINOLTA AccurioPress C10500

- HDD Unit: "UK-112"

- Paper Feeder Unit: "PF-713"

- Version: All firmware versions listed in Table 2-1

Table 2-1 Firmware Versions of the TOE

Display on Firmware Version Screen	Display on Web Connection	Version Name
Image Control System I1	Image Processing System I1	AE940Y0-00I1-GM0-11
Image Control System I2	Image Processing System I2	AE940Y0-00I2-G00-10
Image Control System I3	Image Processing System I3	AE940Y0-00I3-G00-11
Image Control System I4	Image Processing System I4	AE940Y0-00I4-G00-10
Image Control System I5	Image Processing System I5	AE940Y0-00I5-GM0-11
ADF System F	ADF System F	AAMP0Y0-00F1-G00-09
Audio System T	Audio System T	AE940Y0-00T1-G00-10
Browser W	Browser W	AE940Y0-00W1-G00-11
Scanner L	Scanner System L	AC570Y0-00L1-G00-10
Printer Control C	Printer System C	AE940Y0-00C1-G00-11
Network Control P9	Network Control P9	AE940Y0-00P9-G00-11
Printer Sub-CPU D1	Printer Sub-CPU D1	AE940Y0-00D1-G00-11
Printer Sub-CPU D2	Printer Sub-CPU D2	AE940Y0-00D2-G00-10
Printer Sub-CPU D4	Printer Sub-CPU D4	AE940Y0-00D4-G00-10

3. Security Policy

The TOE provides the basic functions of the MFP such as copy, scan, and document storage and retrieval. The TOE also has the functionality to store the user document data in the TOE, and to communicate with user terminals and various servers via a network.

The TOE provides security functions that satisfy the requirements of the Conformance PP, to protect the document data processed by the MFP and setting data etc. affecting security.

As the background of the security functions provided by the TOE, user roles, assets, threats, and organizational security policies assumed for the TOE are described in following Section 3.1 to 3.4. Details of the security functions of the TOE are described in Chapter 5.

3.1 Users

The user roles assumed for the TOE are shown in Table 3-1.

Table 3-1 User Roles

Designation	Definition
Normal User	A User who has been identified and authenticated and does not have an administrative role
Administrator	A User who has been identified and authenticated and has an administrative role

3.2 Assets

The assets assumed to be protected by the TOE are shown in Table 3-2, Table 3-3 and Table 3-4. There are two categories of the assets, User Data and TSF Data, as shown in Table 3-2. Furthermore, User Data is classified as shown in Table 3-3 and TSF Data is as shown in Table 3-4.

Table 3-2 Assets

Designation	Category	Definition
D.USER	User Data	Data created by and for Users that do not affect the operation of the TSF
D.TSF	TSF Data	Data created by and for the TOE that might affect the operation of the TSF

Table 3-3 Assets (User Data)

Designation	Type	Definition
D.USER.DOC	User Document Data	Information contained in a User's Document, in electronic or hardcopy form
D.USER.JOB	User Job Data	Information related to a User's Document or Document Processing Job

Table 3-4 Assets (TSF Data)

Designation	Type	Definition
D.TSF.PROT	Protected TSF Data	TSF Data for which alteration by a User who is neither the data owner nor in an Administrator role might affect the security of the TOE, but for which disclosure is acceptable
D.TSF.CONF	Confidential TSF Data	TSF Data for which either disclosure or alteration by a User who is neither the data owner nor in an Administrator role might affect the security of the TOE

3.3 Threats

The threats assumed for the TOE are shown in Table 3-5.

Table 3-5 Threats

Designation	Definition
T.UNAUTHORIZED_ACCESS	An attacker may access (read, modify, or delete) User Document Data or change (modify or delete) User Job Data in the TOE through one of the TOE's interfaces.
T.TSF_COMPROMISE	An attacker may gain Unauthorized Access to TSF Data in the TOE through one of the TOE's interfaces.
T.TSF_FAILURE	A malfunction of the TSF may cause loss of security if the TOE is permitted to operate.
T.UNAUTHORIZED_UPDATE	An attacker may cause the installation of unauthorized software on the TOE.
T.NET_COMPROMISE	An attacker may access data in transit or otherwise compromise the security of the TOE by monitoring or manipulating network communication.

3.4 Organizational Security Policies

The organizational security policies required for the TOE are shown in Table 3-6.

Table 3-6 Organizational Security Policies

Designation	Definition
P.AUTHORIZATION	Users must be authorized before performing Document Processing and administrative functions.
P.AUDIT	Security-relevant activities must be audited and the log of such actions must be protected and transmitted to an External IT Entity.
P.COMMS_PROTECTION	The TOE must be able to identify itself to other devices on the LAN.

P.STORAGE_ENCRYPTION	If the TOE stores User Document Data or Confidential TSF Data on Field-Replaceable Nonvolatile Storage Devices, it will encrypt such data on those devices.
P.KEY_MATERIAL	Cleartext keys, submasks, random numbers, or any other values that contribute to the creation of encryption keys for Field- Replaceable Nonvolatile Storage of User Document Data or Confidential TSF Data must be protected from unauthorized access and must not be stored on that storage device.

4. Assumptions and Clarification of Scope

This chapter describes the assumptions and the operational environment to operate the TOE as useful information for the assumed readers to determine whether to use the TOE.

4.1 Usage Assumptions

Table 4-1 shows assumptions to operate the TOE. The effective performances of the TOE security functions are not assured unless these assumptions are satisfied.

Table 4-1 Assumptions

Designation	Definition
A.PHYSICAL	Physical security, commensurate with the value of the TOE and the data it stores or processes, is assumed to be provided by the environment.
A.NETWORK	The Operational Environment is assumed to protect the TOE from direct, public access to its LAN interface.
A.TRUSTED_ADMIN	TOE Administrators are trusted to administer the TOE according to site security policies.
A.TRAINED_USERS	Authorized Users are trained to use the TOE according to site security policies.

4.2 Environmental Assumptions

Figure 4-1 shows the assumed operating environment of the TOE. The TOE is installed in a typical office and is connected to a LAN, which is the internal network of the organization. Users primarily operate the TOE by using its operation panel. Some of management functions of the TOE can also be used by operating a client PC connected to the LAN.

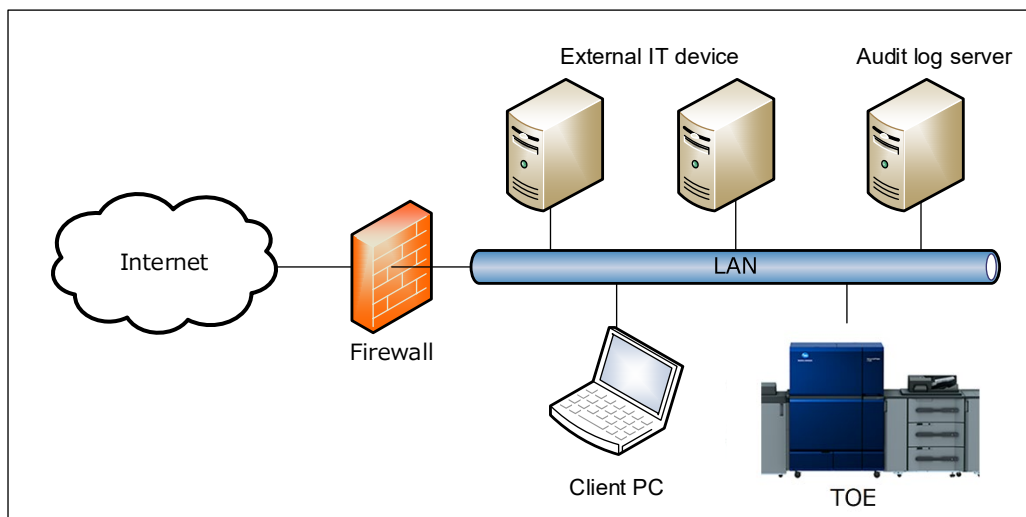


Figure 4-1 Operational Environment of the TOE

The operational environment of the TOE consists of the following components.

- 1) Client PC

A client PC is a general-purpose PC for administrator. The following software is required.

- OS: Windows 11 Home
- Software for IPsec: included in OS
- Web browser: Microsoft Edge 125

2) Audit Log Server

An audit log server is a server to store the audit log generated by the TOE. Software that supports the syslog is required. In this evaluation, the following software was used.

- Software for IPsec: strongswan 5.9.2
- Software for syslog: rsyslog 8.2102.0

3) External IT device

An external IT device is a server used to send user document data scanned by TOE software that supports WebDAV, SMB, or FTP protocols is required. In this evaluation, the following software was used.

- Software for IPsec: strongswan 5.9.2
- Software for WebDAV: apache2 2.4.46
- Software for SMB: samba 4.13.5
- Software for FTP: vsftpd 3.0.3

It should be noted that the reliability of the hardware and the software other than the TOE shown in this configuration is outside the scope of this evaluation. Those are assumed to be trustworthy.

4.3 Clarification of Scope

The functions provided by the TOE or ensured by this evaluation have the following restrictions.

1) Servers and client PCs

Administrators are responsible for operating servers and client PCs cooperating with the TOE securely.

The only operations that can be performed from a client PC are the initial IPsec setting by the administrator and checking the TOE firmware version. All other TOE functions cannot be used from the client PC.

2) Encryption key for encrypting stored data

In this TOE, the encryption key to encrypt the stored data is generated at the time of manufacture, and no means is provided for the purchaser of the TOE to re-generate the key. Therefore, if the administrator performs an operation to delete the encryption key, the TOE shall become unusable.

5. Architectural Information

This chapter explains the scope and the main components of the TOE.

5.1 TOE Boundary and Components

Figure 5-1 shows the composition of the TOE. The TOE is the entire MFP with the necessary options.

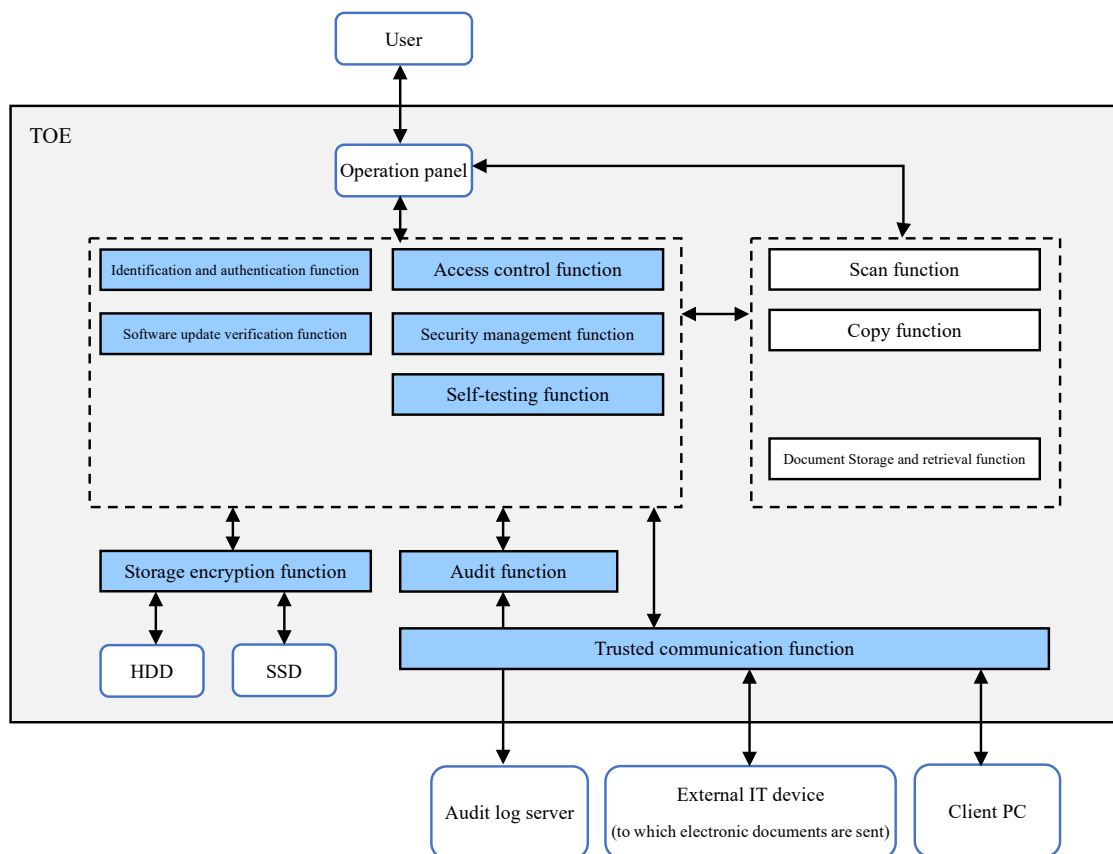


Figure 5-1 Composition of the TOE

The functions provided by the TOE consist of basic functions and security functions. The security functions of the TOE are described below. Refer to Chapter 11 for the basic functions.

1) Identification and Authentication function

This function is a function to identify and authenticate users with their IDs and passwords, when users use the TOE from the operation panel of the MFP, the client PC's web browser.

This function has the following functionality to reinforce the identification and authentication.

- Restrict the minimum password length.
- Suspend authentication for a certain period of time upon authentication failure (for operation panel and web browser); Lock the account upon consecutive authentication failures (for the operation panel).

- Terminate the session if there is no operation for a certain time after the successful authentication.

2) Access Control function

This function is a function to control the access to the user data when users operate the basic functions of the MFP on them. The access control is performed based on the owner information of the user data and on the user's identification information and role.

3) Storage encryption function

This function is a function to encrypt the data stored in the TOE. AES CBC mode with a key length of 256 bits is used to encrypt the stored data.

Encryption keys are generated using a random bit generator with enough entropy that is difficult to guess.

4) Trusted Communication function

This function is a function to protect communication data between the TOE and IT devices using encryption communication protocol (IPsec).

Encryption keys are generated using a random bit generator with enough entropy that is difficult to guess.

5) Security Management function

This function is a function to restrict the setting, etc. of the security functions to administrators. However, normal users can change their passwords.

6) Audit function

This function is a function to generate audit logs on audit events relevant to the security functions and send them to the log server.

7) Software update verification function

This function is a function to verify the digital signature of new firmware when the firmware is updated.

8) Self-testing function

This function is a function to verify the hash value of the firmware at the start-up of the TOE.

5.2 IT Environment

The TOE communicates with servers and client PCs via LAN. The function of the TOE described in "4) Trusted Communication function" realizes IPsec communication in cooperation with those IT devices.

6. Documentation

The identification of the guidance documents of the TOE is listed in Table 6-1. TOE users are required to fully understand and comply with the following documents in order to satisfy the assumptions.

Table 6-1 Guidance (Japanese)

Name ¹	Version
KONICA MINOLTA AccurioPress C14010/C14010S AccurioPress C12010/C12010S AccurioPress C10500/C10500S User's Guide	01.10.00
KONICA MINOLTA AccurioPress C14010 / C12010 / C10500 User's Guide Security Functions (Administrator)	1.0 (Issued 2025/07/30)
KONICA MINOLTA AccurioPress C14010 / C12010 / C10500 User's Guide Security Functions (Users)	1.0 (Issued 2025/07/29)

¹ The guidance name listed in Table 6-1 is the translation of Japanese name.

7. Evaluation conducted by Evaluation Facility and Results

7.1 Evaluation Facility

ECSEC Laboratory Inc., Evaluation Center that conducted the evaluation as the Evaluation Facility is approved under JISEC and is accredited by NITE (National Institute of Technology and Evaluation), the Accreditation Body, which joins Mutual Recognition Arrangement of ILAC (International Laboratory Accreditation Cooperation). It is periodically confirmed that the above Evaluation Facility meets the requirements on the appropriateness of the management and evaluators for maintaining the quality of evaluation.

7.2 Evaluation Approach

The evaluation was conducted in accordance with the assurance requirements in the CC Part 3 required by the Conformance PP using the evaluation methods prescribed in the CEM and the assurance activities of the Conformance PP.

Details for evaluation activities were reported in the Evaluation Technical Report. The Evaluation Technical Report explains the summary of the TOE as well as the content of the evaluation and the verdict for each work unit in the CEM and assurance activity of the Conformance PP.

7.3 Overview of Evaluation Activity

The history of the evaluation conducted is described in the Evaluation Technical Report as follows.

The evaluation started in 2025-04 and concluded upon completion of the Evaluation Technical Report dated 2025-10. The Evaluation Facility received a full set of evaluation deliverables necessary for evaluation provided by the developer, and examined the evidence in relation to a series of evaluation conducted. Furthermore, the evaluator conducted the evaluator testing at the Developer site in 2025-06 and 2025-07.

Concerns found in evaluation activities were issued as the Observation Reports, and reported to the developer. Those concerns were reviewed by the developer, and all the concerns were resolved eventually.

Concerns in the evaluation process that the Certification Body found were described as the certification oversight reviews and sent to the Evaluation Facility. After the Evaluation Facility and the developer examined the concerns, those were reflected in the Evaluation Technical Report.

7.4 IT Product Testing

As the verification results of the evidence shown in the evaluation process, the evaluator performed the evaluator independent testing to ensure that the security functions of the product are accurately implemented, and the evaluator penetration testing based on vulnerability assessments.

7.4.1 Developer Testing

The developer testing is not included in the assurance requirements for this evaluation.

7.4.2 Evaluator Independent Testing

The evaluator performed the evaluator independent testing (hereinafter referred to as the "independent testing") based on the evidence shown in the evaluation process to ensure that the security functions of the product are accurately implemented. The independent testing performed by the evaluator is described below.

1) Independent Testing Environment

The environment for the independent testing is based on the operational environment of the TOE shown in Figure 4-1. The components used in the independent testing environment are listed in Table 7-1.

Table 7-1 Components for the Independent Testing Environment

Components	Description
TOE	<ul style="list-style-type: none"> • KONICA MINOLTA AccurioPress C14010 with UK-112 and PF-713, GM0-11 • KONICA MINOLTA AccurioPress C12010 with UK-112 and PF-713, GM0-11
Client PC	<ul style="list-style-type: none"> - OS: Windows 11 Home - Web browser: Microsoft Edge 125
Servers	<ul style="list-style-type: none"> - OS: Kali Linux 2021.1 - IPsec: strongswan 5.9.2 - Audit Log server: rsyslog 8.2102.0 - WebDAV server: apache2 2.4.46 - SMB server: samba 4.13.5 - FTP server: vsftpd 3.0.3

There are following differences between the configuration of the independent testing and the TOE configuration identified in the ST. The evaluator determined that there are no problems with those differences and that the security functions of the TOE configuration identified in the ST can be considered properly tested.

(1) Tested models

In the models of the TOE described in Chapter 2 "TOE identification", there are multiple models due to the following differences:

- Difference in printing speed

The evaluator determined that the security functions of all the models of the TOE can be considered to have been tested by testing the representative two models considering the above differences, because the security functions of each model are the same.

(2) Using additional testing tools

In the independent testing, some testing tools were used to confirm and alter the communication data and to confirm the encryption function. The validity of those testing tools was confirmed by the evaluator.

2) Summary of the Independent Testing

A summary of the independent testing performed by the evaluator is described below.

a. Viewpoints of the Independent Testing

Viewpoints of the independent testing devised by the evaluator based on the requirements of the Conformance PP and on the provided evaluation documentation are as follows.

<Viewpoints of the Independent Testing>

- (1) Confirm security functions for each Security Functional Requirement (SFR).
- (2) Confirm that the implementation of the cryptographic algorithms is correct.

b. Independent Testing Outline

An outline of the independent testing performed by the evaluator is as follows.

<Independent Testing Approach>

The behavior of the TOE for inputs using the operation panel of the TOE, the client PC and the testing tools was confirmed by following means:

- If the behavior can be confirmed from the external interfaces of the TOE, the external interfaces of the TOE are used (including audit logs).
- If the behavior cannot be confirmed from the external interfaces of the TOE, the developer interface of the TOE is used.

<Content of the Performed Independent Testing>

The evaluator performed the independent testing of 16 items.

Table 7-2 shows contents of the independent testing corresponding to the viewpoints.

Table 7-2 Performed Independent Testing

Viewpoint	Outline of the Independent Testing
(1)	<Confirmation of security functions> Confirm that all security functions work as the specification with the test items created based on the assurance activities of the Conformance PP for each SFR or the requirements of the SFR.

(2)	<p><Confirmation of implementation of cryptographic algorithms> Confirm the following cryptographic algorithms are implemented as the specification using the test program installed in the TOE.</p> <ul style="list-style-type: none"> - RSA (key generation, signature verification) - AES-CBC-128, AES-CBC-256 - SHA-1, SHA-256, SHA-384, SHA-512 - HMAC-SHA-1, HMAC-SHA-256, HMAC-SHA-384, HMAC-SHA-512 - CTR_DRBG (AES)
-----	--

c. Result

All the independent testing performed by the evaluator was correctly completed, and the evaluator confirmed the behavior of the TOE. The evaluator confirmed consistencies between the expected behavior and all the test results.

7.4.3 Evaluator Penetration Testing

The evaluator devised and performed the evaluator penetration testing (hereinafter referred to as the "penetration testing") on the potentially exploitable vulnerabilities of concern under the assumed environment of use and attack level from the evidence shown in the process of the evaluation. The penetration testing performed by the evaluator is described below.

1) Summary of the Penetration Testing

A summary of the penetration testing performed by the evaluator is as follows.

a. Vulnerability of Concern

The evaluator searched into the provided documentation and the publicly available information for the potential vulnerabilities, and then identified the following vulnerabilities which require the penetration testing.

- (1) There is a concern that unintended network ports of the TOE may be open, and known vulnerabilities may exist in the network services running on the TOE.
- (2) There is a concern that known vulnerabilities may exist in the Web interface of the TOE.

b. Penetration Testing Outline

The evaluator performed the following penetration testing to identify potentially exploitable vulnerabilities.

<Penetration Testing Environment>

The penetration testing was performed in the environment where tools for penetration testing are added to the independent testing environment. The tools used in the penetration testing are listed in Table 7-3.

Table 7-3 Penetration Testing Tools

Name	Outline and Purpose of Use
Nmap 7.91	A tool to detect available network service ports.

<Content of the Performed Penetration Testing>

Table 7-4 shows contents of the penetration testing corresponding to the vulnerabilities of concern.

Table 7-4 Outline of the Penetration Testing

Vulnerability	Penetration Testing Outline
(1)	<ul style="list-style-type: none"> - Confirm that unexpected network ports of the TOE are not open using Nmap. - Confirm that there are no known vulnerabilities by retrieving the name and version of software etc. used by the TOE using the developer interface.
(2)	<ul style="list-style-type: none"> - Confirm that unintended behaviour is not observed even if character strings that may cause unauthorized processing are entered into the web interface of the TOE.

c. Result

In the penetration testing performed by the evaluator, the evaluator did not find any exploitable vulnerabilities that attackers who have the assumed attack potential could exploit.

7.5 Evaluated Configuration

The conditions of the TOE configuration, that are prerequisites for this evaluation, are as described in the guidance documents listed in Chapter 6. In order to use the TOE securely as ensured by the evaluation, the TOE must be set as described in the guidance documents. Different settings are not subject to assurance by this evaluation.

7.6 Evaluation Results

The evaluator had concluded that the TOE satisfies all work units prescribed in the CEM and all assurance activities in the Conformance PP as per the Evaluation Technical Report.

In the evaluation, the following were confirmed.

- PP Conformance:

- Protection Profile for Hardcopy Devices 1.0 dated September 10, 2015

- Protection Profile for Hardcopy Devices - v1.0 Errata #1, June 2017

- Guideline for Certification Application with HCD-PP Conformance [16]

- Treatment regarding FCS_RBG_EXT.1 Test
 - Treatment regarding FCS_IPSEC_EXT.1.1
 - Treatment regarding FTP_TRP.1(b)

- Security functional requirements: Common Criteria Part 2 Extended

- Security assurance requirements: Common Criteria Part 3 Conformant

As a result of the evaluation, the verdict "PASS" was confirmed for the following assurance components required by the Conformance PP.

ASE_INT.1, ASE_CCL.1, ASE_SPD.1, ASE_OBJ.1, ASE_ECD.1,
 ASE_REQ.1, ASE_TSS.1, ADV_FSP.1, AGD_OPE.1, AGD_PRE.1,
 ALC_CMC.1, ALC_CMS.1, ATE_IND.1, AVA_VAN.1

The result of the evaluation is only applied to those which are composed by the TOE corresponding to the identification described in the Chapter 2.

7.7 Evaluator Comments/Recommendations

There is no evaluator recommendation to be addressed to procurement entities.

8. Certification

The Certification Body performed the certification from the following viewpoints based on the materials submitted by the Evaluation Facility during the evaluation process.

1. Contents pointed out in the Observation Reports shall be adequate.
2. Contents pointed out in the Observation Reports shall properly be solved.
3. The submitted documentation was sampled, the content was examined, and the related work units in the CEM and assurance activities of the Conformance PP shall be evaluated as presented in the Evaluation Technical Report.
4. Rationale of the evaluation verdict by the evaluator presented in the Evaluation Technical Report shall be adequate.
5. The evaluator's evaluation methodology presented in the Evaluation Technical Report shall conform to the CEM and the assurance activities of the Conformance PP.

Concerns found in the certification process were prepared as the certification oversight reviews, and those were sent to the Evaluation Facility. The Certification Body confirmed such concerns pointed out in the certification oversight reviews were solved in the ST and the Evaluation Technical Report and issued this Certification Report.

8.1 Certification Result

As a result of verification of the Evaluation Technical Report, Observation Reports and related evaluation documentation submitted by the Evaluation Facility, the Certification Body determined that the TOE evaluation satisfies the assurance requirements required by the Conformance PP.

8.2 Recommendations

Procurement entities who are interested in the TOE are advised to refer "4.3 Clarification of Scope" and "7.5 Evaluated Configuration" to make sure the scope of the evaluation and the operational requirements of the TOE meet the operational conditions assumed by each user.

As explained in Chapter 2, verifying the TOE identification requires checking the information printed on the HDD unit's packaging box, in addition to the TOE display information, etc. Note that it is necessary to retain the information printed on the HDD unit's packaging box even after starting of the TOE operation in order to confirm the TOE identification.

9. Annexes

There is no annex.

10. Security Target

Security Target [12] of the TOE is provided as a separate document from this Certification Report.

Title:	KONICA MINOLTA AccurioPress C14010 / C12010 / C10500 with UK-112 and PF-713 Security Target
Version:	1.12
Publication Date:	September 1, 2025
Author:	KONICA MINOLTA, INC.

11. Glossary

The abbreviations relating to the CC used in this report are listed below.

CC	Common Criteria for Information Technology Security Evaluation
CEM	Common Methodology for Information Technology Security Evaluation
PP	Protection Profile
SFR	Security Functional Requirement
ST	Security Target
TOE	Target of Evaluation
TSF	TOE Security Functionality

The abbreviations relating to the TOE used in this report are listed below.

MFP	Multi-Function Product
-----	------------------------

The abbreviations relating to IT technology used in this report are listed below.

AES	Advanced Encryption Standard
CBC	Cipher Block Chaining
CTR_DRBG	Counter (CTR) mode block cipher algorithm DRBG
DRBG	Deterministic Random Bit Generator
FTP	File Transfer Protocol
HMAC	Keyed-Hash Message Authentication Code
RSA	Rivest Shamir Adleman
SHA	Secure Hash Algorithm
SMB	Server Message Block
WebDAV	Web-based Distributed Authoring and Versioning

The definitions of terms used in this report are listed below.

Copy Function	A function to scan paper documents by the operation of the MFP operation panel and duplicate them.
Scan Function	A function to scan paper documents by the operation of the MFP operation panel and send the scanned user document data to an external IT device (WebDAV server, SMB server, FTP server).
Document storage and retrieval Function	A function to scan paper documents and store the scanned user document data into the MFP or retrieve and print the stored user document data by operating the operation panel of the MFP.
Assurance Activity	Evaluation work to be performed by an evaluator in order to conform to a PP. It is a supplement of the CEM. In the case of the Conformance PP [14], it is described in the Conformance PP.

12. Bibliography

- [1] IT Security Evaluation and Certification Scheme Document, August 2025, Information-technology Promotion Agency, Japan, CCS-01
- [2] Requirements for IT Security Certification, December 2023, Information-technology Promotion Agency, Japan, CCM-02
- [3] Requirements for Approval of IT Security Evaluation Facility, October 2021, Information-technology Promotion Agency, Japan, CCM-03
- [4] Common Criteria for Information Technology Security Evaluation Part 1: Introduction and general model, Version 3.1 Revision 5, April 2017, CCMB-2017-04-001
- [5] Common Criteria for Information Technology Security Evaluation Part 2: Security functional components, Version 3.1 Revision 5, April 2017, CCMB-2017-04-002
- [6] Common Criteria for Information Technology Security Evaluation Part 3: Security assurance components, Version 3.1 Revision 5, April 2017, CCMB-2017-04-003
- [7] Common Criteria for Information Technology Security Evaluation Part 1: Introduction and general model, Version 3.1 Revision 5, April 2017, CCMB-2017-04-001, (Japanese Version 1.0, July 2017)
- [8] Common Criteria for Information Technology Security Evaluation Part 2: Security functional components, Version 3.1 Revision 5, April 2017, CCMB-2017-04-002, (Japanese Version 1.0, July 2017)
- [9] Common Criteria for Information Technology Security Evaluation Part 3: Security assurance components, Version 3.1 Revision 5, April 2017, CCMB-2017-04-003, (Japanese Version 1.0, July 2017)
- [10] Common Methodology for Information Technology Security Evaluation: Evaluation methodology, Version 3.1 Revision 5, April 2017, CCMB-2017-04-004
- [11] Common Methodology for Information Technology Security Evaluation: Evaluation methodology, Version 3.1 Revision 5, April 2017, CCMB-2017-04-004, (Japanese Version 1.0, July 2017)
- [12] KONICA MINOLTA AccurioPress C14010 / C12010 / C10500 with UK-112 and PF-713 Security Target, Version 1.12, September 1, 2025, KONICA MINOLTA, INC.
- [13] KONICA MINOLTA AccurioPress C14010 / C12010 / C10500 with UK-112 and PF-713 GM0-11 Evaluation Technical Report, Version 1.6, October 6, 2025, ECSEC Laboratory Inc., Evaluation Center
- [14] Protection Profile for Hardcopy Devices 1.0 dated September 10, 2015 (Certification Identification: JISEC-C0553)
- [15] Protection Profile for Hardcopy Devices - v1.0 Errata #1, June 2017
- [16] Guideline for Certification Application with HCD-PP Conformance, Version 1.9, March 13, 2024, Information-technology Promotion Agency, Japan, JISEC-CERT-2024-A19